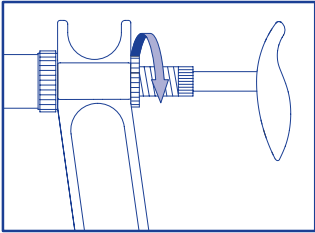


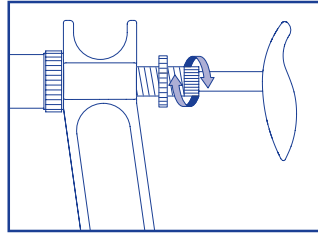
SOCOREX® SELF-REFILLING SYRINGES

Quick Guide

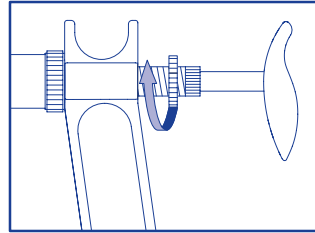
Volume setting



Unscrew locking nut.

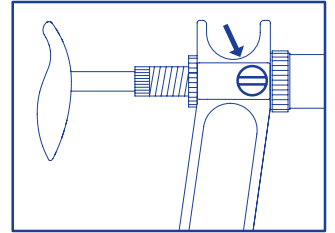


Adjust plunger to desired volume.



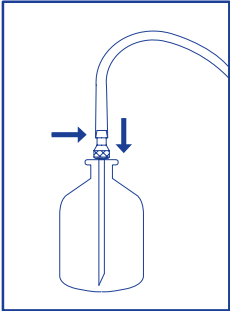
Tighten locking nut.

Body setting

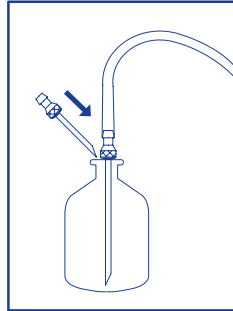


Adjust body and grip position using locking screw on handle side.

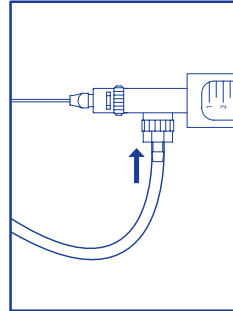
Installing accessories: Tubing



Attach tubing to aspiration cannula, insert into bottle.

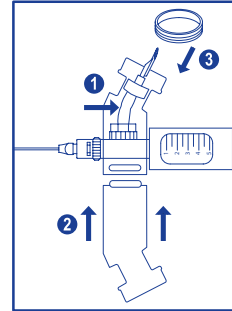


Pierce rubber stopper with vent cannula.

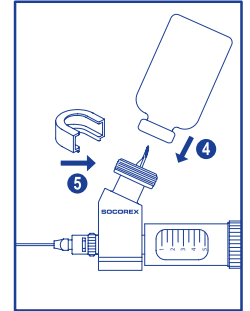


Attach tubing to syringe.

Vial holder

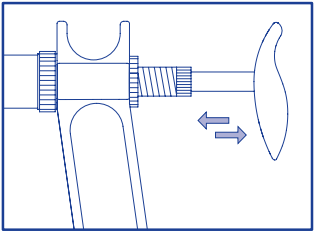


Insert connecting tube and needle, assemble parts.

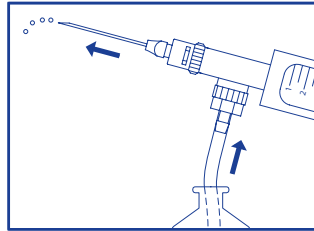


Pierce bottle rubber stopper, lock bottle.

Priming

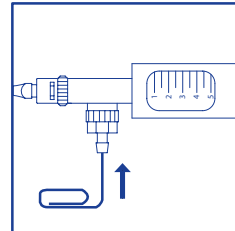


Activate handle until liquid reaches needle.

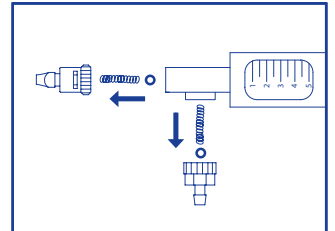


Expell liquid to eliminate any air bubbles.

In case of clogged valves

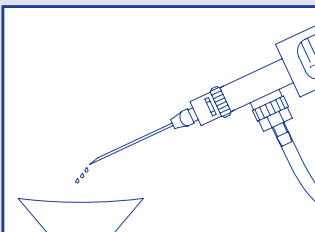


Introduce small pin and push to loosen ball in valve.

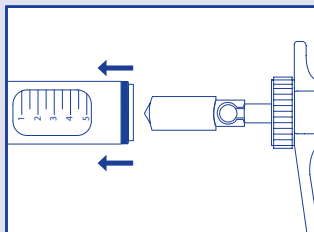


If insufficient, disassemble valves and clean.

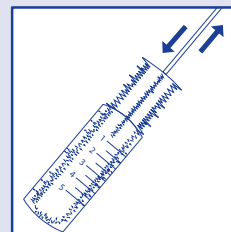
Daily maintenance: Purge, disassembling and cleaning



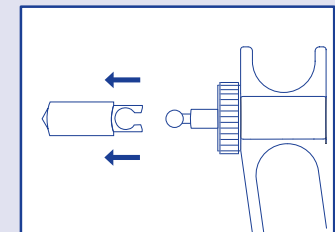
Rinse with warm water and purge completely.



Unscrew body and remove.

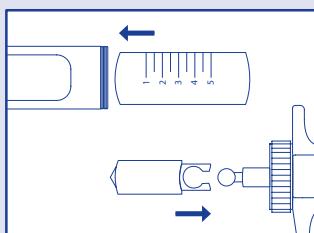


Clean residues in glass barrel with a brush.

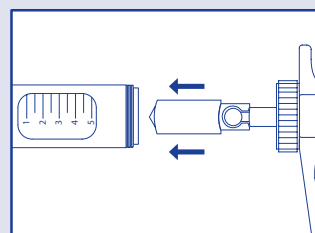


Detach plunger, clean and let dry.

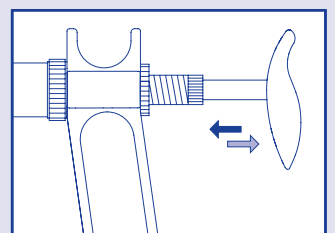
Reassembling



Carefully reassemble glass barrel into body. Attach plunger to handle rod.



Gently insert plunger into glass barrel than screw body.



Activate to check proper functioning.



121°C



ERGONOMIC COMFORT

I.SYR.E A109